

## Douglas

Towering up to 60 metres tall, Douglas is a tree that stands out. The grand expression is preserved in the planks, where the unique grain bears testimony to nature's power and beauty. We source our raw wood mainly from the Black Forest, and only the best of the 80 to 120-year-old trees have what it takes to get through the eye of the needle. It is this careful selection and the extraordinary craftsmanship that place Dinesen Douglas in a class of its own.

Douglas planks create a highly elegant and harmonious expression due to the extraordinary dimensions. An extravagant solution with clear references to the majestic Douglas tree. Choose between Classic and Natural.

### Classic

---

Subtle structure with a classic expression. Harmonious and calm. Fewer knots.

### Natural

---

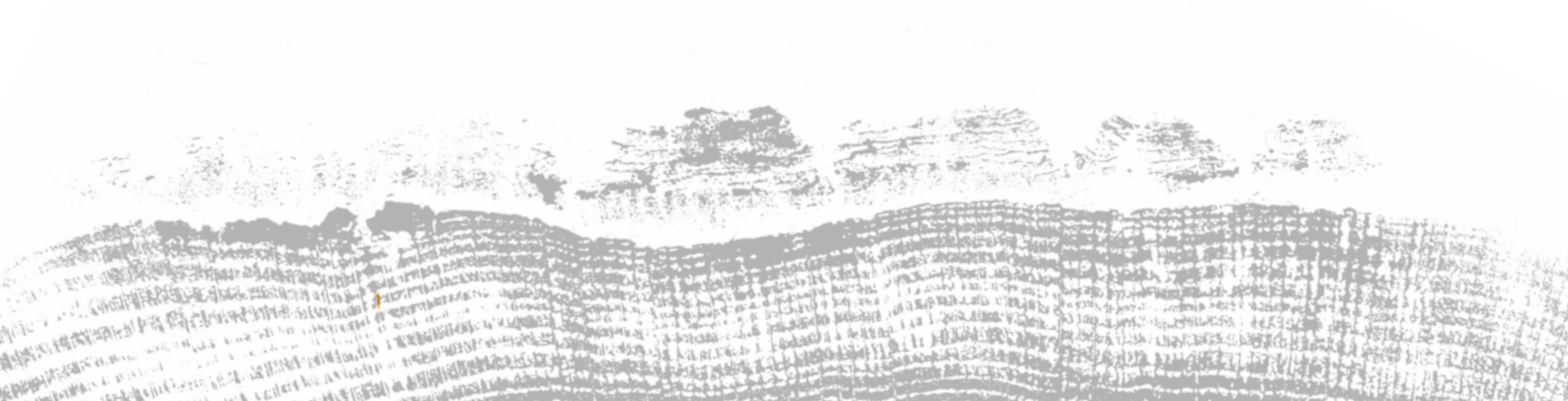
Dynamic structure with a natural expression. Authentic and warm. More knots.

Dinesen Floors a/s  
Klovtoftvej 2, Jels  
6630 Rødding, Denmark

T +45 7455 2140  
F +45 7455 2976  
E [info@dinesen.com](mailto:info@dinesen.com)

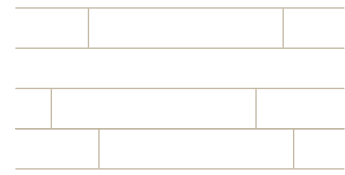
Showroom  
Søtorvet 5  
1371 Copenhagen, Denmark

T +45 3311 2140  
F +45 3316 2141  
E [info@dinesen.com](mailto:info@dinesen.com)



# Douglas

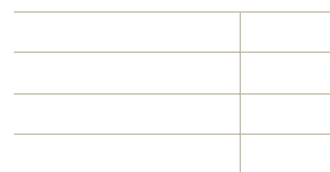
Planks in random lengths are delivered in available lengths. This makes for a fluid transition from one room to the next and a coherent expression that is perfect for many projects. Each plank is made as long as possible, which makes it possible to use a very high proportion of the raw wood.



Random lengths	Thickness	Width	Length	Classic Price per m <sup>2</sup>	Natural Price per m <sup>2</sup>	
	28 mm (1.1")	200 mm (7.9")	1 – 5 m (3' 3" – 16' 5")	72 EUR	54 EUR	
			5 – 7 m (16' 5" – 23')	102 EUR	74 EUR	
	250 mm (9.8")	250 mm (9.8")	1 – 5 m (3' 3" – 16' 5")	93 EUR	67 EUR	
			5 – 7 m (16' 5" – 23')	117 EUR	87 EUR	
	300 mm (11.8")	300 mm (11.8")	2 – 5 m (6' 7" – 16' 5")	105 EUR	79 EUR	
			5 – 7 m (16' 5" – 23')	125 EUR	93 EUR	
	350 mm (13.8")	350 mm (13.8")	2 – 5 m (6' 7" – 16' 5")	117 EUR	93,5 EUR	
			5 – 7 m (16' 5" – 23')	138 EUR		
	35 mm (1.4")	300 mm (11.8")	2 – 5 m (6' 7" – 16' 5")	110 EUR	82 EUR	
			5 – 7 m (16' 5" – 23')	134 EUR	98 EUR	
		350 mm (13.8")	350 mm (13.8")	2 – 5 m (6' 7" – 16' 5")	121 EUR	90 EUR
				5 – 7 m (16' 5" – 23')	142 EUR	104 EUR
400 mm (15.7")	400 mm (15.7")	2 – 5 m (6' 7" – 16' 5")	136 EUR	108,5 EUR		
		5 – 7 m (16' 5" – 23')	159 EUR			
450 mm (17.7")	450 mm (17.7")	2 – 5 m (6' 7" – 16' 5")	148 EUR	118,5 EUR		
		5 – 7 m (16' 5" – 23')	173 EUR			

# Douglas

Full-length planks are an elegant solution. The clean lines make for a calm expression and can be used to highlight the architecture of a room. Full lengths are a good choice if you want a simple and clean expression. It takes large amounts of raw wood to produce full-length planks, so delivery time may be long.



Full lengths	Thickness	Width	Length*	Classic Price per m <sup>2</sup>	Natural Price per m <sup>2</sup>
	28 mm (1.1")	200 mm (7.9")	1 – 5 m (3' 3" – 16' 5")	82 EUR	59 EUR
			5 – 7 m (16' 5" – 23')	103 EUR	75 EUR
			7 – 10 m (23' – 32' 10")	156 EUR	114 EUR
	250 mm (9.8")	250 mm (9.8")	1 – 5 m (3' 3" – 16' 5")	102 EUR	74 EUR
			5 – 7 m (16' 5" – 23')	125 EUR	93 EUR
			7 – 10 m (23' – 32' 10")	156 EUR	114 EUR
	300 mm (11.8")	300 mm (11.8")	1 – 5 m (3' 3" – 16' 5")	115 EUR	86 EUR
			5 – 7 m (16' 5" – 23')	137 EUR	100 EUR
			7 – 10 m (23' – 32' 10")	167 EUR	123 EUR
			10 – 15 m (32' 10" – 49')	call	call
	350 mm (13.8")	350 mm (13.8")	1 – 5 m (3' 3" – 16' 5")	129 EUR	95 EUR
			5 – 7 m (16' 5" – 23')	150 EUR	109 EUR
7 – 10 m (23' – 32' 10")			184 EUR	136 EUR	
10 – 15 m (32' 10" – 49')			call	call	
	35 mm (1.4")	300 mm (11.8")	1 – 5 m (3' 3" – 16' 5")	115 EUR	86 EUR
			5 – 7 m (16' 5" – 23')	138 EUR	100 EUR
			7 – 10 m (23' – 32' 10")	167 EUR	123 EUR
			10 – 15 m (32' 10" – 49')	call	call
	350 mm (13.8")	350 mm (13.8")	1 – 5 m (3' 3" – 16' 5")	129 EUR	95 EUR
			5 – 7 m (16' 5" – 23')	150 EUR	109 EUR
			7 – 10 m (23' – 32' 10")	184 EUR	136 EUR
			10 – 15 m (32' 10" – 49')	call	call
	400 mm (15.7")	400 mm (15.7")	1 – 5 m (3' 3" – 16' 5")	147 EUR	107 EUR
			5 – 7 m (16' 5" – 23')	165 EUR	122 EUR
			7 – 10 m (23' – 32' 10")	200 EUR	147 EUR
			10 – 15 m (32' 10" – 49')	call	call
450 mm (17.7")	450 mm (17.7")	1 – 5 m (3' 3" – 16' 5")	162 EUR	120 EUR	
		5 – 7 m (16' 5" – 23')	184 EUR	136 EUR	
		7 – 10 m (23' – 32' 10")	216 EUR	159 EUR	
		10 – 15 m (32' 10" – 49')	call	call	

\* Within the given intervals, the planks are combined on demand. You can choose between the following fixed lengths: 1,0 – 1,4 – 1,8 – 2,2 – 2,6 – 3,0 – 3,4 – 3,8 – 4,2 – 4,6 – 5,0 – 5,4 – 5,8 – 6,2 – 6,6 – 7,0 – 7,5 – 8,0 – 8,5 – 9,0 – 9,5 – 10,0 – 10,5 – 11,0 – 11,5 – 12,0 – 12,5 – 13,0 – 13,5 – 14,0 – 14,5 – 15,0 m (3' 3" – 4' 7" – 5' 11" – 7' 3" – 8' 6" – 9' 10" – 11' 2" – 12' 6" – 13' 9" – 15' 1" – 16' 5" – 17' 6" – 19' – 20' 4" – 21' 8" – 22' 12" – 24' 7" – 26' 3" – 27' 11" – 29' 6" – 31' 2" – 32' 10" – 34' 5" – 36' 1" – 37' 9" – 39' 4" – 41' 13" – 42' 8" – 44' 3" – 45' 11" – 47' 7" – 49')

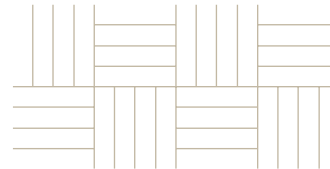
# GrandPattern

GrandPattern is an option where large planks are laid in familiar historical patterns. A modern solution with respect for history, which takes on a contemporary and exclusive appearance due to the proportions.

## Herringbone



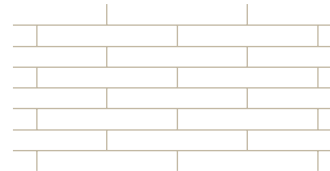
## Mosaic



## Chevron



## Bond



The material consumption of Chevron is higher than the other patterns as the planks must be customised individually.

Douglas	Thickness	Width	Length	Classic Price per m <sup>2</sup>	Natural Price per m <sup>2</sup>
	28 mm (1.1")	200 mm (7.9")	60 cm (23.6")	68 EUR	55 EUR
			80 cm (31.5")	77 EUR	60 EUR
			100 cm (39.4")	85 EUR	65 EUR
		250 mm (9.8")	50 cm (19.7")	75 EUR	60 EUR
			75 cm (29.5")	85 EUR	66 EUR
			100 cm (39.4")	92 EUR	72 EUR
		300 mm (11.8")	60 cm (23.6")	84 EUR	65 EUR
			90 cm (35.4")	92 EUR	70 EUR
			120 cm (47.2")	100 EUR	79 EUR
	350 mm (13.8")	70 cm (27.6")	90 EUR	69 EUR	
		105 cm (41.3")	98 EUR	77 EUR	
		140 cm (55.1")	107 EUR	84 EUR	
	35 mm (1.4")	400 mm (15.7")	80 cm (31.5")	109 EUR	86 EUR
			120 cm (47.2")	119 EUR	95 EUR
			160 cm (63")	132 EUR	103 EUR
450 mm (17.7")		90 cm (35.4")	129 EUR	102 EUR	
		135 cm (53.1")	144 EUR	112 EUR	
		180 cm (70.9")	156 EUR	121 EUR	

# General

## About the planks

The planks are supplied unfinished and have a moisture content of 8-10 %. Dinesen floor planks are CE-labelled in accordance with EN 14342.

## Delivery times

Delivery times for the various dimensions and types vary and may in some cases be considerable. For more information on delivery time, please contact Dinesen on +45 7455 2140.

## Installation

Always consult our instructions or contact our technical department at [info@dinesen.com](mailto:info@dinesen.com) or +45 7455 2140.

## Underfloor heating

All Dinesen planks are suitable for underfloor heating.

## Maintenance

We recommend Dinesen products for finishing and maintenance. Our soaps are made especially for Dinesen floors and contain components that secure correct maintenance of the floors.

To preserve the beauty of your Dinesen floor, you need to use Dinesen's maintenance products. We cannot assure the durability and condition of the surface if other products are used.

## Webshop

Our webshop with maintenance products and instruction videos can be found at [dinesen.com](http://dinesen.com).

## Prices

The present price list was released on 1 January 2019. All the listed prices are stated in EUR per m<sup>2</sup>. All the listed prices are exclusive of VAT and delivery.

We do not accept any liability for printing errors.